



October 2024

Satellite

FAMILY CHILD CARE SYSTEM
NEWSLETTER

Congrats on moving to Associate level!

Bobbiejo Stepanek – Jo Jo's Family Childcare

Amy Nogar – Amy & Kids Co. Nature Playschool

Beth Zielenski – Tadpoles to Frogs

DID YOU KNOW?

BETWEEN APRIL AND JUNE, SATELLITE
CONSULTANTS MADE

179

ON SITE AND VIRTUAL VISITS TO PROGRAMS.

Congratulations to
Temitope Oluti for
achieving a license for
her program Flourish
Family Childcare.



LEARNING AND CONNECTING TOGETHER

SPOTLIGHT ON

Sweet Home Smiles

Program Owner: Manuela Aleman; Affiliate Satellite Educator

"We are a bilingual (Spanish/English) program and emphasize sign language as we encourage independence, creativity, and respect with daily routines and a curriculum based on optimal development. We like to let the children who come to our center know that there is a community that surrounds us. Walking through the neighborhood where we are located, we attend the public library and the children's museum by public transportation. My sister and partner María Del Refugio Alemán and I are just as likely as the children to get our hands dirty helping with an art project or playing in the sand." – Manuela Aleman



"My professional background is in social work. My educational background includes certification in clinical neuropsychology, brain rehabilitation, and speech therapy. I also earned the infant and toddler and preschool credential. I have worked in child care for nine years now. With my sister Maria having a degree in nursing, we are a strong, well-rounded team." – Manuela Aleman



"Respect for children and their families is at the heart of our program. By nurturing strong relationships, providing safe and caring environments, and engaging in best practices, we help children learn to value community, indulge their curiosity, and build lifelong trust. We believe that children thrive when their individual identities are respected, and they are naturally inspired by and part of a community that celebrates our similarities and differences. Our curriculum empowers children as change-makers, invites them to explore and create, learn how to build community, and most importantly, have fun with play-based learning experiences." – Manuela Aleman



LEARNING AND CONNECTING TOGETHER

SPOTLIGHT ON My Little World

Program Owner: Maria Luisa Osorio Jasso
Accredited Satellite Educator

“My name is Maria Laura Osorio Jasso. I have a family care program called My Little World. In 2016, I opened my family care program, and I received my accreditation in 2017. I have been training for all these years and have been able to complete four credentials, which has helped me obtain knowledge in early childhood to offer a better service to the families and children I care for. I use my knowledge, my best effort, and my commitment because I recognize that I have the children of the future in my hands.” – Maria Luisa Osorio Jasso



“My family care program is a small place as its name says, of which I feel very proud because it is well-organized and created with different areas of development. My children not only enjoy this wonderful space, but also have the opportunity to explore, experiment, develop and draw their own conclusions. The children learn through play and the educational materials that they always have available.” – Maria Luisa Osorio Jasso



Open Communication with Families

Relevant Satellite Accreditation Standards

I. Interactions and Relationships

The provider's interactions with parents

C. The provider strives for effective and open communication with parents.

4. The provider encourages conversations with parents about changes that may affect the child or the care of the child.

G. The provider gives parents the information they need about daily activities in order to stay in touch with how and what their child is doing in the family child care program.

1. There is opportunity for daily exchange of information about the children's activities, feelings, and needs (for example, notes, telephone calls, time to talk at drop-off or pick-up).

H. The provider has established formal and informal ways to communicate with parents about their child.



"Anna had a tough day today. I struggled to find ways to help her calm. Have you noticed this lately? What works for you at home?"

"Yeah, that sounds like what is happening at home. I wonder what is going on. She did just move into her own room at night, so maybe that has something to do with it. She loves when I sing her favorite song 'You Are My Sunshine.'"



"That sounds like a big transition, which would explain her mood. Growing up is hard! I will try singing that to her tomorrow if she is feeling sad. Thank you!"

"No, thank you! It's good to know that you think it's a normal response. I know Anna is very loved and cared for here. See you tomorrow!"



The Basics

Open communication, illustrated in the scenario above, is characterized by honesty and transparency. It is a style of communication in which both individuals feel free to openly share their ideas, thoughts, and perspectives.

Why establish open communication with families? Strong partnerships with families are critical in early childhood care and education. Open, responsive communication is an essential component of this partnership and helps support...

- **trust.** When trust is established, families and educators more often assume the other person has good intentions and feel safe to express weaknesses which helps strengthen relationships.
- **consistency.** When their home and child care settings align, children are more equipped to explore, take risks, manage emotions, and solve problems because they feel safe and know what to expect.

DIVING INTO THE STANDARDS

- **intentionality.** Communicating openly with families provides the educator with more information about the child, including their preferences and experiences, to inform the program's curriculum. Communication about changes in a child's life also helps educators and families provide more responsive, intentional support. For example, an educator may read a story about welcoming a new sibling and a parent may remind a child when there will be a substitute.
- **family education.** Educators help families gain a deeper understanding of child development through continuous communication about their child's learning and growth. As a result, families feel more comfortable asking questions, brainstorming solutions, and working collaboratively with educators.

How can I support open communication? Educators establish open two-way communication with families by...

*asking questions to understand,
acknowledging challenges,
sharing successes,
providing updates,
and respecting family expertise.*

Use diversified methods of communication and consider the educator's and the family's preferences. Notes, phone calls, face-to-face conversations, surveys, home visits, texts, scheduled meetings, photos, and videos all engage families in open communication about their child's learning and support strong family-educator partnerships.



I want to learn more!

- [Communicating with Families: Helpful Suggestions](#)
- [Communicating with Families About Children's Learning](#)
- [Five Rs for Promoting Positive Family Engagement](#)
- [Family Engagement, Diverse Families, and An Integrated Review of the Literature](#)

Making it Work: Incorporating Rich Art Experiences into a Mixed-Age Setting

This course will explore the impact of rich art experiences on children's development and learning. Participants will learn strategies for supporting children's creative expression in family child care through planning and implementing process-based, developmentally appropriate art opportunities. This course will introduce strategies for incorporating art every day with a mixed-age group of infants, toddlers, preschoolers, and school-age children.

Learning Objectives:

1. Understand the impact of meaningful art experiences on child development.
2. Learn strategies for supporting children's engagement in meaningful art.
3. Implement opportunities for creative expression through art every day for mixed-age groups.

October 30

6 – 8 pm

Zoom

[Register here](#)



Satellite
FAMILY CHILD CARE SYSTEM

Satellite Professional Development

Evening Professional Learning Opportunities



Wednesdays • 6 – 8 pm • Zoom • 2 hours of Registry credit • English and Spanish

Dates	Event	Registration
October 30	Making it Work: Incorporating Rich Art Experiences into a Mixed-Age Setting	Register by 10/28
November 13	Nature-Based Winters: Indoors and Out in Family Child Care	Register by 11/11
February 19	Transitions Throughout the Day in Family Child Care: Strategies, Skills, and Wisdom from Satellite Programs	Register by 2/17
April 23	How to Create an Environment that Supports Children's Ideas AND Maintains Your Boundaries	Register by 4/21

Exploring Quality in Family Child Care

Tuesdays • 1 – 2 pm • Zoom • 1 hour of Registry credit • English and Spanish

Dates	Topic	Registration
October 8	Should We Tell Children to Apologize?	Register by 10/6
November 19	Dr. Peter Gray Discusses Mixed-Age Play	Register by 11/17
December 10	Process Art	Register by 12/8
January 7	Open-Ended Questions	Register by 1/5
February 4	Risky Play	Register by 2/2
March 11	Supporting Infant's Large Motor Development	Register by 3/9
April 8	Back-and-Forth Interactions	Register by 4/6

Guided Book Studies

Thursdays • 1 – 2 pm • Zoom • 16 hours of Registry credit • English only

Dates	Book	Registration
January 9 – February 27	Focus on Developmentally Appropriate Practice: Equitable and Joyful Learning with Infants and Toddlers	Register by 12/12

Obtaining Registry Credit* for Satellite's Virtual (Zoom) Professional Development Sessions

To receive hours of Registry of credit for web-based professional development, you must:

1. Be present for at least 75% of the session.
2. Complete an evaluation at the end of the session and enter your Registry information.

You can view and print your proof of attendance through your Wisconsin Registry account. It may take several weeks before your attendance is entered into the Registry. Certificates of completion will not be mailed or emailed to participants.

*If you do not complete the steps above and wish to document a Satellite event that you attended or a Satellite event recording you watched, complete the DCF form Continuing Education Record—Independent Reading/Video Viewing for your own record.

Miss a professional development event?

Watch the recording on our [YouTube Channel](#).

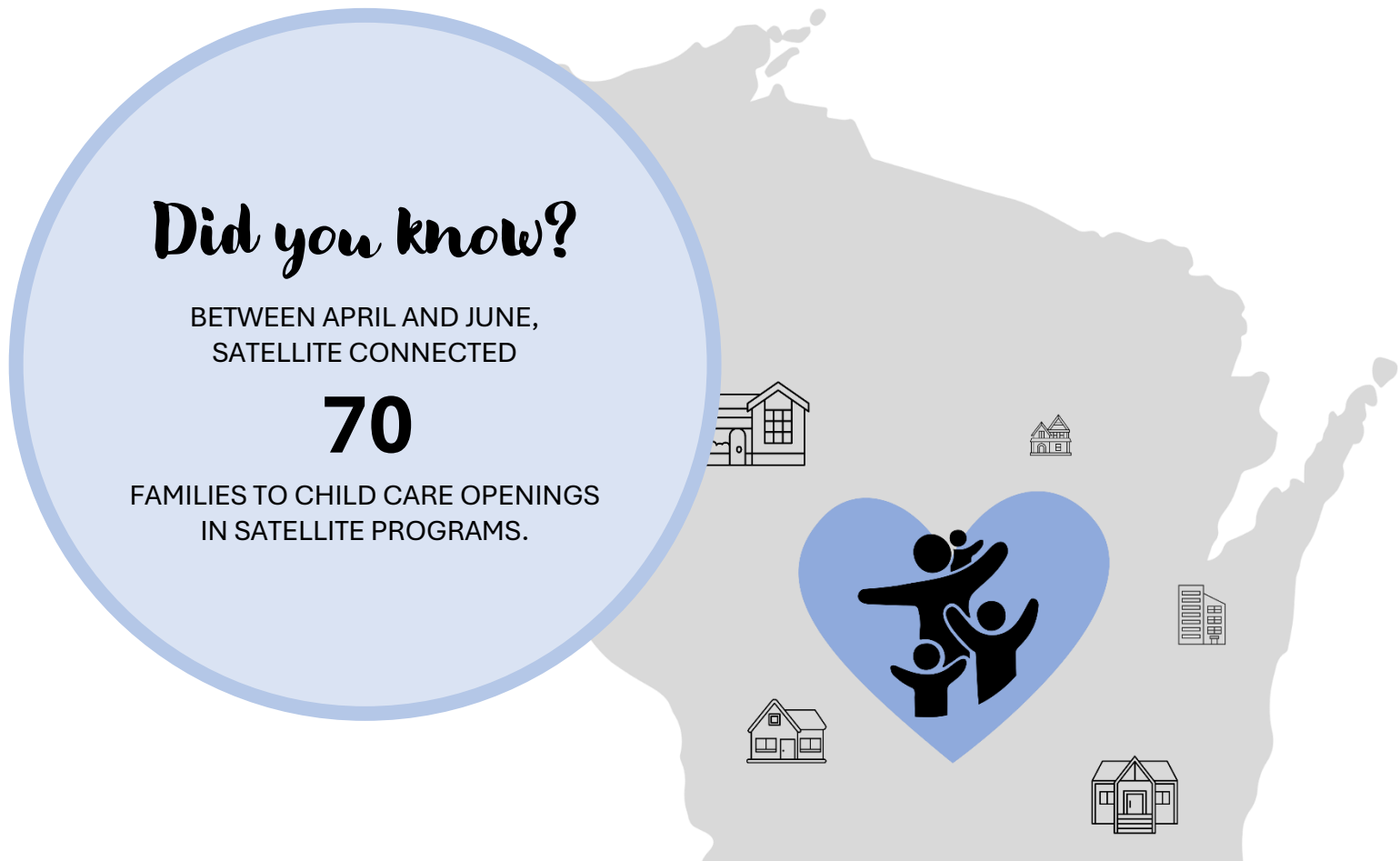


Did you know?

BETWEEN APRIL AND JUNE,
SATELLITE CONNECTED

70

FAMILIES TO CHILD CARE OPENINGS
IN SATELLITE PROGRAMS.



Satellite Social Events

These opportunities are open to educators participating in Satellite's accreditation system.



Educator Appreciation Dinner

A dinner in honor of family child care professionals • 6 pm

Dates	Location	RSVP	🌐
October 9	Milwaukee	RSVP here	English, Spanish
March 19	Eau Claire	RSVP here	English
May 14	Madison	RSVP here	English, Spanish
June 25	Milwaukee	RSVP here	English, Spanish

Satellite Gatherings

Time for family child care professionals to spend together • 6 pm

Dates	Location	RSVP	🌐
October 23	Madison	RSVP here	English, Spanish
January 8	Madison	RSVP here	English, Spanish
February 26	Kimberly	RSVP here	English

Satellite Support Groups

Noche Latina

An evening for Spanish speaking family child care professionals.

6 – 8 pm • Spanish • 4709 Verona Road Madison • Contact evargas@reachdane.org with questions

October 16

November 20

December 11

February 12

March 12

April 9

June 11

Sojourn

A support group for Satellite family child care professionals that meets at family programs.

Evening • Second Tuesday of every month • English • Madison area • RSVP to letthedragonfly@gmail.com

September 10

October 8

November 12

December 10

January 14

February 11

March 11

April 8

May 13

June 10

Arcoíris

A support group for Spanish speaking family child care professionals that meets at family programs.

Evening • Third Friday of every month • Madison area • RSPV to Margarita at (608) 446-6142

September 20

October 18

November 15

December 20

January 16

February 21

March 21

April 18

May 16

June 20

SATELLITE LOAN PROGRAM

Satellite members have full access to Satellite's equipment and curriculum units. Check the link below regularly to view our full lending options. When you sign up for equipment and units, your consultant will inform you of whether the item is available immediately or if you're on the waitlist.

Pick-up and drop-off of equipment and units occurs during consultant visits to your program. Additional exchanges of equipment and units may occur at the Satellite office. Communicate with your accreditation consultant to determine a day and time when Satellite staff are present.

Satellite Equipment, Units and Book Loans



Push Cart



Child's Armchair



Clothes Washer

Magnet Stand



Safety Saturday

Satellite programs enjoyed a day of free health and safety trainings!



Thank you to our presenters, *Dane County Department of Human Services, Early Childhood Health Consultation, Epilepsy Foundation of Wisconsin, Johnny Winston CARES, and 4-C.*



Thank you to our sponsors, *City of Madison, Office of Child Care and Family Resources, and 4-C.*



BUSINESS MANAGEMENT

Professional Resources

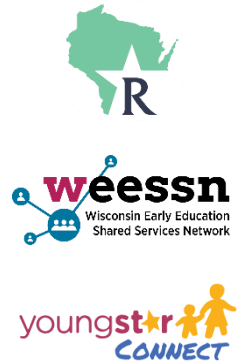
Satellite Services

- [Mentorship Program](#)
- [Satellite Application](#)
- [Equipment and Unit Loan Program](#)
- [Lending Library](#)
- [Report your family child care program's child openings here](#)



Wisconsin

- [T.E.A.C.H. Scholarship Program](#)
- [REWARD Stipend Program](#)
- [Wisconsin Early Childhood Shared Services Network \(WEESSN\)](#)
- [The Wisconsin Registry](#)
- [Child Care Forms and Publications \(Licensing\)](#)
- [YoungStar Connect](#)
- [Early Childhood Mental Health Consultation](#)



Professional Organizations focused only on Family Child Care

- [Wisconsin Family Child Care Association](#)
- [Home Grown](#)
- [National Association for Family Child Care](#)



For Satellite
participating
programs only



The October Financial Wellness session is:

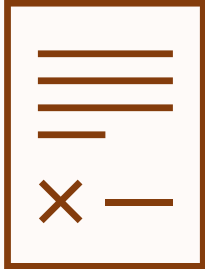
Get Your Ducks in a Row: Estate Planning! This session helps you prepare for the unexpected so your loved ones can work through your financial affairs with less overwhelm. We will explain and share what you need to know along with providing you steps to take so your assets are divided based on your wishes. Learn key terms, how to document appropriately, and prepare the best you can to bring you the utmost peace of mind.

Live Session: October 9 at 11:30AM [Register here!](#) (Use "Reach Dane" as the organization with whom you're affiliated)

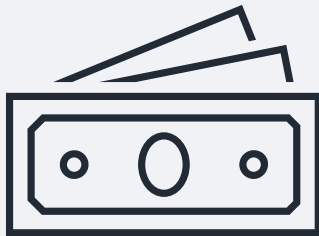
Recorded Session: [Watch here!](#)

BUSINESS MANAGEMENT

Click the text below to view these videos featuring Tom Copeland from the Administration for Children and Families (ACF)!

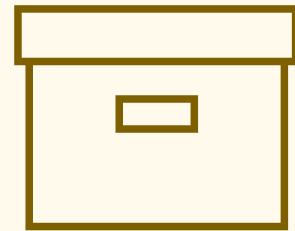


What are the Two Most Important Terms to Include in a Contract?



How Do Providers Pay Themselves?

Top Three Record Keeping Tips for Family Child Care Providers



Satellite Family Child Care programs are invited to attend the final dress rehearsal of our first show of the season, **Diary of a Wimpy Kid**.

Friday, October 11

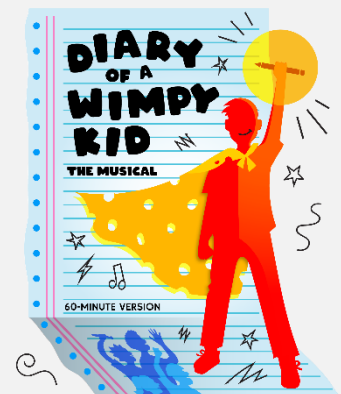
Free

6:30 PM

Starlight Theater at Madison Youth Arts Center (MYArts).

1055 East Mifflin St, Madison, WI 53703.

[Click here to RSVP!](#)



Satellite Team



Estella Vargas

Accreditation Consultant
Bilingual (Spanish/English)
(608) 852-7724
evargas@reachdane.org



Amy Christianson

Language Access, Curriculum, and
Satellite Director
achristianson@reachdane.org



Jen Jorgensen

Accreditation Consultant
(608) 416-9531
jjorgensen@reachdane.org



Laura Simkin

Satellite Associate Director
(608) 381-2676
lsimkin@reachdane.org
*Contact Laura with all general questions
related to accreditation and Satellite services.*



Rachel Halstead

Accreditation Consultant
(608) 690-0174
rhalstead@reachdane.org



Grace Eilers

Family Child Care Content
Specialist
(608) 400-2823
geilers@reachdane.org



Stephanie Winkel

Accreditation Consultant
(608) 416-3996
swinkel@reachdane.org



Laura Cruz

Administrative Assistant
Bilingual (Spanish/English)
(608) 910-0382
lcruz@reachdane.org



Mykenzie Lerg

Accreditation Consultant
(608) 843-5378
mlerg@reachdane.org

Satellite Family Child Care System

(608) 275-6740

satellitelfcc@reachdane.org

Mailing and drop-off address:

2096 Red Arrow Trail, Fitchburg, WI 53711

*Label mailed and hand delivered items with "attention:
Satellite" & and the Satellite staff person's name*

Satellite Supports



Thank you to our partners for helping us provide these services at no cost to participants:

